

SYNTHO-SLEEVE™

HDD: HORIZONTAL DIRECTIONAL DRILLING



Problem

A 64-year-old section of natural gas pipeline, attached to a street bridge on the outskirts of downtown Houston, must be replaced to improve the reliability and integrity of the system.

Conditions

Crews face numerous challenges, including boring a 1,200-foot channel for the new 12-inch gas line 85-feet under Buffalo Bayou. The replacement line was placed beneath the bayou to avoid compromising the bridge structure. The bayou wraps around Houston's downtown skyline district and forced workers to maneuver large equipment and materials in areas with limited space and a lot of traffic.

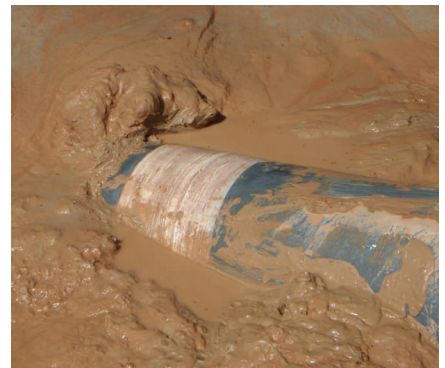
Solution

With the clock ticking, the crew didn't have time for machine applied systems or slow curing field joint compounds. Syntho-Sleeve Outerwrap was applied as abrasion protection for the specified cold applied corrosion tape. Both the corrosion tape and Syntho-Sleeve Outerwrap were quickly hand applied and the fast cure of the Syntho-Sleeve resin system kept the job rolling.

Result

Integrity issues with the field joint coating in an inaccessible line such as this are unacceptable. Syntho-Sleeve provided the added protection to ensure a 100% protected pipe and a successful job. The Syntho-Sleeve System survived the pull-back fully intact.

Syntho-Sleeve Outerwrap is designed to protect field welded joints on pipelines from the abrasion stresses and scarring of Directional Drilling and boring. Syntho-Sleeve provides mechanical protection to the preapproved coating of your choice. This unique product has a faster setting time, is easier to apply, has a very low profile, is extremely conformable, and is highly impact resistant. The result is a cost effective; long term protection against corrosion with superior mechanical protection.



©Neptune Research Inc. (NRI). NRI® is a registered trademark of NRI while Syntho-Sleeve™ is a trademark of NRI. Please contact your local NRI distributor or office for the most current product specifications. User shall determine suitability of product for use and assumes all risk. SYS CS 0311

NRI
Innovative Composite Solutions