

SYNTHO-GLASS®

WASTE WATER MANAGEMENT: RAW SEWAGE LINE



Problem

A 54" OD raw sewage line with a 48" saddle behind a mechanical joint at the City's sewage treatment plant.

Conditions

The crack was approximately 8" long and 1" wide at the six o'clock position. The widest portion of the saddle is 12" long and the narrowest is 4". The operating pressure of the line is 35 psi, resulting in the need for immediate repair of the line.

Solution

A Butyl Tape Patch was applied to the 8" X 1" crack, then the 54" OD was wrapped with Pressure Sealing Rubber Tape. In order to ensure a water tight seal, Syntho-Subsea™, a Kevlar reinforced wet curing epoxy, was then applied to the entire repair area, while also providing chemical resistance. Sixteen layers of Syntho-Glass®, a fiberglass cloth which is pre-impregnated with resin, was then applied. The Syntho-Glass permanently repairs and reinforces the line.

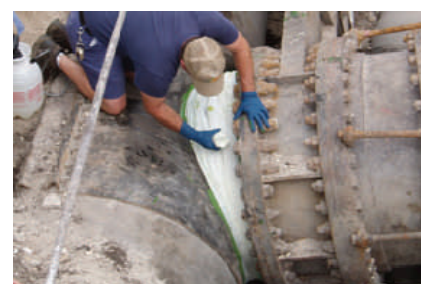
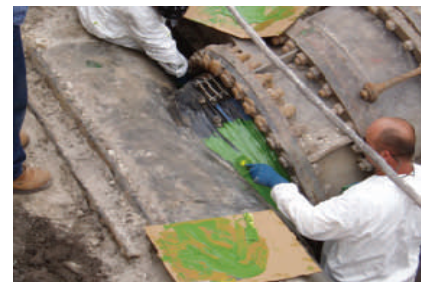
Result

This composite repair system eliminated the need to immediately replace the line. The repair, which could have taken several months and thousands of dollars, was completed inexpensively in a matter of hours.

"The repair, which could be described as intricate, saved the City valuable time and resources," said Mark Darmanin, City of Fort Lauderdale Distribution & Collection Manager.

Syntho-Glass fully restored the pipe's hoop and axial strength to enable operation at full MAOP. Syntho-Glass saved thousands of home owners from being without service. The City saved time, money and maintained good public relations. How can Syntho-Glass help you?

Neptune Research, Inc. is a leader in innovative solutions for pipe repair and corrosion protection. Since its founding in 1982, Neptune Research Inc. has been engaged in the development, manufacturing and marketing of a patented resin impregnated fiberglass cloth which provides an effective, time and cost efficient solution for the repair and corrosion protection of pipes, pipelines, pilings and similar structures. Our products are used globally and serve a broad range of markets including municipalities, industrial, marine, oil and gas, mining and utilities.



©Neptune Research Inc. (NRI) Syntho-Glass® is a registered trademark while Syntho-Subsea™ is a trademark of NRI. Kevlar® is a registered trademark of E. I. du Pont de Nemours and Company. Please contact your local NRI distributor or office for the most current product specifications. User shall determine suitability of product for use and assumes all risk. SG CS 0311

NRI
Innovative Composite Solutions